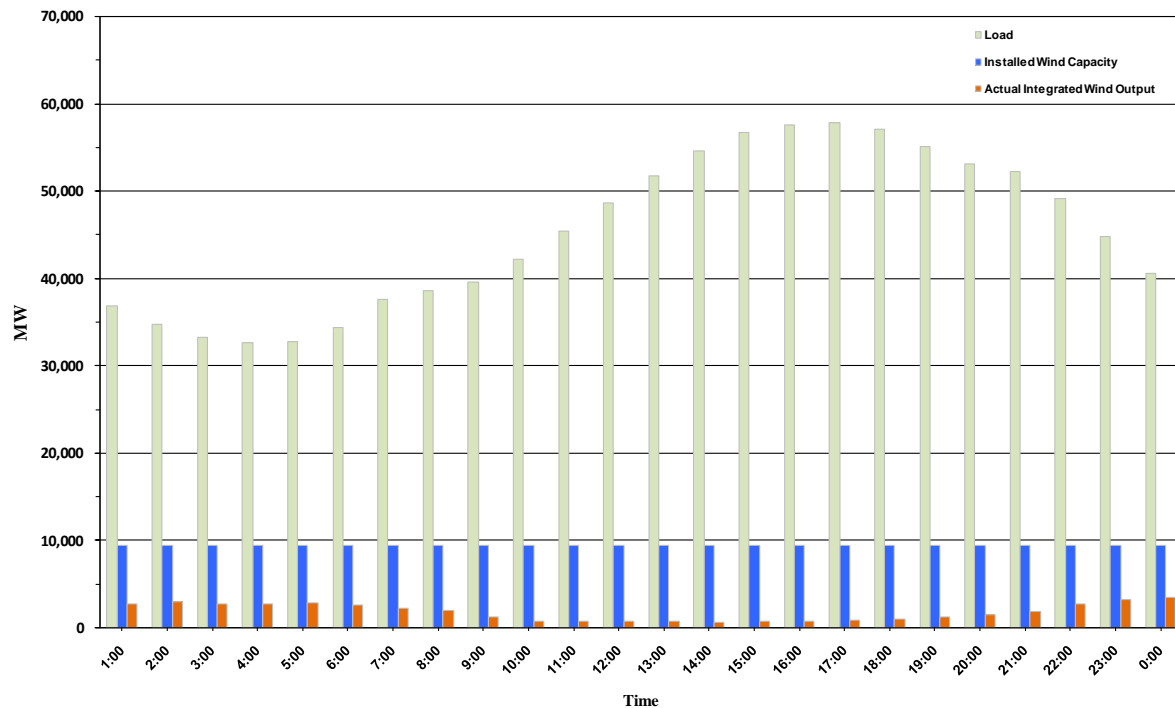




ERCOT Grid Operations Wind Penetration Report: 09/13/10

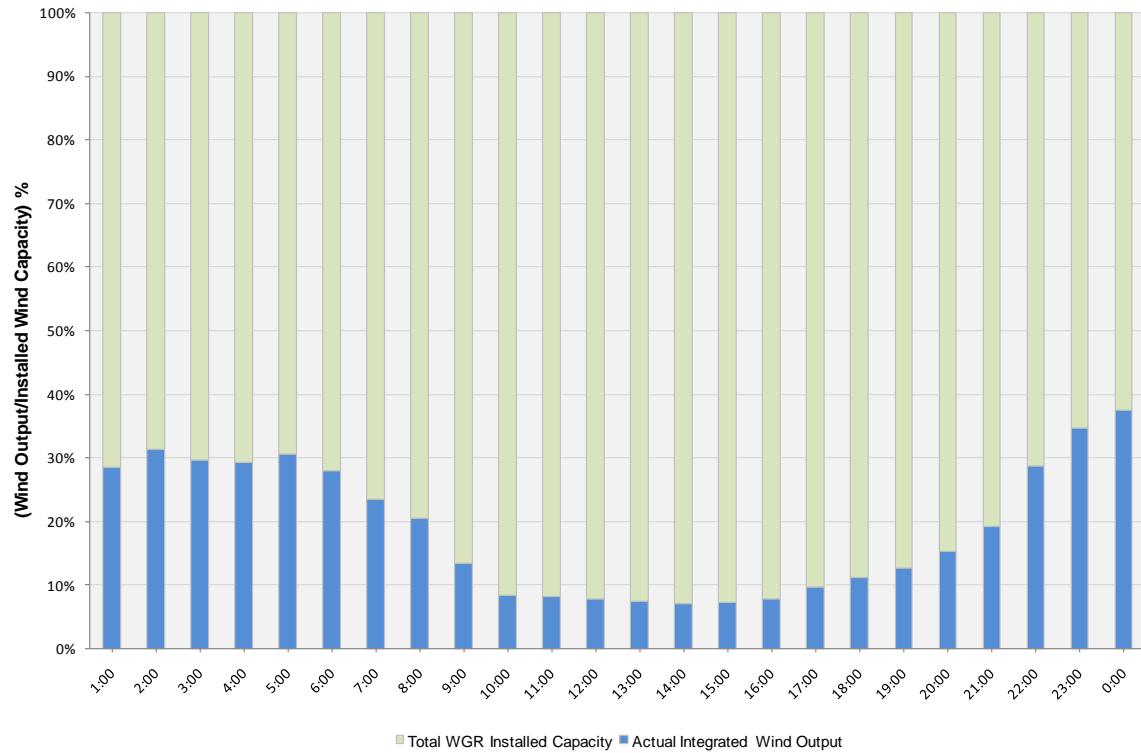
Peak Load	57,870 MW
Load Peak Hour	17
Wind Record 06/12/10	7016 MW
Max Wind value	3627 MW
Wind Peak Hour	23:16:16
Wind Penetration %	8.73

Hourly Average Actual Load vs. Actual Wind Output
09-13-2010

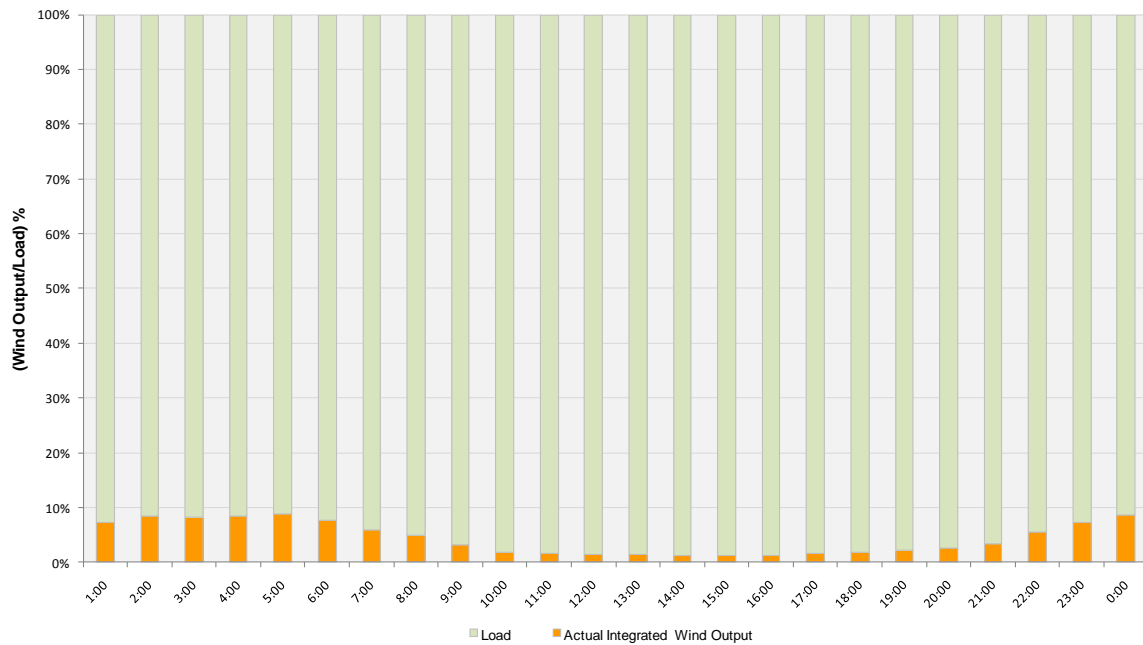




Actual Wind Output as a Percentage of the Total Installed Wind Capacity
09-13-2010



Actual Wind Output as a Percentage of the ERCOT Load
09-13-2010





ERCOT Load vs. Actual Wind Output 09/06/10 - 09/13/10

